

Scone Public School Newsletter

Success for all



82-98 Liverpool Street Scone NSW 2337
Telephone: (02) 6545 1049 Fax: (02) 6545 3046

EMAIL: scone-p.school@det.nsw.edu.au
www.scone-p.schools.nsw.edu.au

TERM 4 WEEK 4

Tuesday 1 November 2016

PRINCIPAL'S MESSAGE

What a wonderful Walkathon result!

Last Thursday all students participated in the P&C Walkathon Fundraiser. The 3-6 students walked around the block and the K-2 students did laps of the back playground. Students walked at their own pace and enthusiastically did their best.

The funds raised from the Walkathon will go towards playground equipment for the back playground. A big thank you to Rachel Roberts from the P&C for organising the prizes and preparations for the Walkathon as well as Corinne Bell for helping to count the donations. It was a great initiative and well supported by our Scone Public school community.

We currently have plans for our back playground that I have attached to this newsletter for everyone to peruse. The playground equipment we hope to purchase will be added to the current plans hopefully in the New Year.

Deborah Fisher -Relieving Principal

*Value for the week:
Trust and Honesty*

DAY FOR DANIEL

Last Friday 28 October was 'Day for Daniel'. All the students were invited to wear **Red** to raise awareness of keeping children safe. Our Vice Captains and Prefects spoke at the assemblies to explain what the day was about:

Recognise Be alert for the clues that warn us when something is unsafe. These clues can be as simple as smelling smoke which warns us there is a fire or a lock down alarm at school.

React If you feel scared, confused, sad or upset you need to REACT. This could even mean breaking a rule, like smashing a window to escape a fire or screaming "NO" to an adult.



Supporting "Day for Daniel"

Report Tell an adult in your life that cares about your safety when there is a problem. It's adults who can keep you safe from harm and who can make a situation safe again for you.

Mrs Marshall
SRC Co-ordinator

AMAZING WALKATHON RESULT

The P&C would like to thank our entire school community for Thursday's amazing Walk-a-thon. It was a huge success, raising over \$9000.00 which will provide some great assistance with improvements to the playground.

The bounce balls have been handed out to students who raised money and the raffle tickets for every \$10 raised have been placed into the box ready to be drawn at 12 noon on Thursday 3 November.

The P&C really appreciated everyone's enthusiasm and effort they went to, not only on the day but also with their fundraising efforts prior to the event. We would also like to thank Hunt-A-Book for their generous donation and Mrs Corrine Bell who helped count money and allocate raffle tickets.

COMING EVENTS FOR TERM 4 2016

Date	Event
1 Nov 2016	Kinder Transition 2.15pm – 3.00pm
4 Nov 2016	Stroke Correction Aberdeen Horse Sports
8 Nov 2016	Kinder Transition 2.15pm – 3.00pm
10 Nov 2016	Year 6 Orientation Day at SHS

Our next meeting will be held on the 15 November with a sausage sizzle from 5:30pm and the meeting at 6pm.

Children are always welcome at P&C Meetings.
Thankyou

Rachel Roberts
P & C Secretary

CONGRATULATIONS

In Term Two a number of classes entered the Koori Kids 2016 NAIDOC Week School Initiative Competitions which saw over 119,000 entries from schools who participated in a variety of competitions. These competitions involved colouring-in, short story writing, or Creative/Essay Writing.

Congratulations to Rueben (1M) who was successful in winning in the colouring-in category. He has received the 'NAIDOC Medal of Excellence' Award. Only 20 of these awards were issued in NSW.



Reuben 1M

SRC CHRISTMAS RAFFLE

The SRC is seeking donations of items to go towards a Christmas Raffle. If every family picked up one



extra item with their shopping we would be able to make up some wonderful hampers. Anything that you think your family would like to win could be sent in, such as FOOD (tinned food, Christmas treats, and any other suitable non-perishable items), Christmas Decorations (fairy lights, table decorations, tree ornaments, etc.) or Presents (Board Games, Books, School Essentials, Small toys).

Please do not send in anything old, Out of Date or second hand, they will not be included.

All items can be left at the Library; students can choose to bring in their goodies on their Library day. The SRC will commence selling Raffle Tickets on 14 November and the Raffle will be drawn at the Year 6 Assembly on 12 December. The tickets will be 50 cents each.

Mrs Marshall for
The SRC

CPR TRAINING

Monday 7 November Year Five and Six will be involved in CPR Training. The children will be learning skills and knowledge on how to perform effective CPR and recovery rolls and what to do in an emergency situation. Please ensure your child has paid by Friday.

SAVE THE DATE

Scone Public School will be holding its 2016 Presentation Day on Friday 9 December. It will commence at 10.00am with K – 2 Awards followed by the year 3 – 6 Awards. Our 2017 School Leaders will be announced during the year 3 – 6 section. As in previous years all students K – 6 will be recognised for the success during the year at Scone Public School. We look forward to our school community joining us on this very special day.

Students need to:

- wear clean, full summer uniform
- have navy blue hair accessories
- wear clean black shoes
- Grey socks for boys and navy socks for girls

If you need assistance with uniform requirements please do not hesitate to contact the class teacher or the office.

ASSEMBLIES:

9.15am: Years 3 – 6

12.10pm: K – 2 (1TW item)

CANTEEN ROSTER TERM 4 WEEK 4 2016

Mon, 31 Oct	Racheal J
Tues, 1 Nov	Racheal J
Wed, 2 Nov	Racheal J
Thurs, 3 Nov	Wendy P
Fri, 4 Nov	Wendy P Kylie Seale

COMMUNITY NEWS

Scone Films will be screening the Tom Hanks movie, *Sully*, about a pilot landing a passenger jet on the Hudson River in New York. Rated M, it will screen at 7.30pm Friday 4 November, at their pop-up cinema at the Senior Citizen's Centre, Oxford Road, Scone. Tickets are \$12. This event is expected to be popular, so to be sure of a ticket, purchase in advance at Hunt a Book, Scone. Doors open 7.15pm. Running time is 1hr 36m. Refreshments available. Everyone is welcome. details www.sconefilms.org.au www.facebook.com/sconefilms

The Smurfs2 will be hosted by Scone Neighbourhood resource Centre and shown on our 6 metre outdoor screen. Saturday 5th November at Scone Park, Hill Street. Bring a chair, beanbag or rug. \$15 family of four. \$5 extra per additional child. Snacks available. Expected start time 7.45pm. (running time 1hr 45min. For more info contact 6545 2562.

Kids for Jesus Come along to the new Kids group during school terms. We meet weekly to enjoy fun activities, singing and other inspirational ideas. Weekly: Mondays Venue: The Scone SDA (Seventh Day Adventist) home church Where: 164 Susan St, Scone. Time: 3:30pm - 4:30pm. Contact: Stanley on 0409 078 105 for more info and to register for Kids 4 Jesus. A parent or guardian needs to attend with your child/ren. – this is a family event.

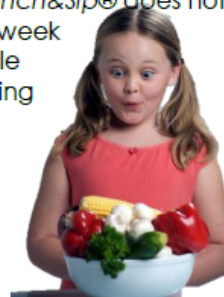
Good for Kids good for life

KEEP CRUNCHING ON THE WEEKENDS

Most NSW primary schools have incorporated *Crunch&Sip®* as a regular part of their school day.

Crunch&Sip® is a time, each day, when students can "refuel" on vegetables and fruit and "rehydrate" with water. It helps children to increase their intake of vegetables and fruit and is a great opportunity to introduce them to new vegetables and fruits.

The great news is that *Crunch&Sip®* does not have to be limited to the week days! Try to keep the whole family healthy by integrating this habit into your family routine on weekends and during the school holidays.



PHONE 4924 6499

Murrurundi Public School proudly presents the

MURRURUNDI FAMILY FUN

Sunday Session

BRAND NEW TALENT
FINLAY O'NEILL
+ LOCAL ARTIST
CHLOE HALL

ACCLAIMED MULTI AWARD
WINNING GOLDEN GUITAR ARTIST
& ADAM HARVEY

SUNDAY 27
NOVEMBER 2016
12 NOON - 5PM

MURRURUNDI PUBLIC SCHOOL GROUNDS
135 MAYNE STREET

LIVE MUSIC + CHILDREN'S GAMES + PLAY ZONE
FAMILY FRIENDLY + VARIOUS FOOD + MARKET STALLS
ENTERTAINMENT + COMPETITIONS + PRIZES

TICKETS \$15 Adults | \$10 Children & Seniors
*Ticket purchases &/or donations can be made online by visiting trybooking.com or contact the Murrurundi Public School 02 6546 6007 / murrurundi.publicschool@det.nsw.edu.au

STRICTLY NO ALCOHOL
BYO PICNIC RUGS + CHAIRS

Find us on Facebook
[facebook.com/murrurundipublic](https://www.facebook.com/murrurundipublic)



Nutrition Snippet

The simplest way

...to make overnight oats.

Make this simple recipe the night before, then rise and shine to a healthy breakfast.

Overnight oats
Preparation time: 5 minutes
Serves: 1



Ingredients:

- ½ cup oats (raw, unprocessed or toasted)
- 4-6 cubes of frozen mango
- ¼ cup natural yoghurt
- ¼ cup muesli
- ½ cup berries (whole or puréed)

Method:

Layer ingredients in to a clean jar (salsa dip or coffee jars are ideal or use a plastic jar if you want a portable breakfast on the go). Store in the fridge overnight. Add some milk in the morning to get the consistency you like. Enjoy straight from the jar.

For more information visit
www.eatittobeatit.com.au
or join us at [facebook.com/eatittobeatit](https://www.facebook.com/eatittobeatit)



CODE OF CONDUCT FOR SCHOOL STUDENTS ON BUSES

It is every student's responsibility to behave in a manner that ensures the safety and comfort of passengers and drivers. This includes:

BEHAVING APPROPRIATELY

- ✓ respect the needs and comfort of other passengers (e.g. no use of offensive or racist language, fighting, spitting, placing feet on seats, throwing things in or from the bus, eating or drinking—except water—unless the bus operator gives written permission)
- ✓ give up seats to all adults and disabled passengers
- ✓ adhere to the law that bans smoking on buses
- ✓ obey reasonable directions from the driver (e.g. where to sit or to remain in the bus)
- ✓ keep arms, legs and heads inside the bus
- ✓ refrain from attracting the attention of the driver except in the case of emergency

RESPECTING PROPERTY

- ✓ protect bus property
- ✓ ensure that buses are not vandalised
- ✓ report any vandalism (e.g. graffiti and window etching)

HOLDING PASSES

- ✓ show travel passes or tickets to the driver on boarding and when requested
- ✓ use the travel pass only for its intended purpose
- ✓ 'swipe' or 'dip' passes in ticket readers if available when boarding
- ✓ keep your pass for your own use—you should not lend your pass to other students or borrow one from them.

Disobeying these rules may lead to the withdrawal of school bus travel passes and/or prosecution.

In the case of students travelling under the School Student Transport Scheme, this Code of Conduct is also printed on the application form. You are reminded that when signing the application form the parent/guardian/carer explicitly declares that they support the Code and that it has been explained to their child.

This brochure is about school student behaviour on buses. It outlines appropriate behaviour and describes behaviour that is inappropriate. The Code of Conduct was developed to ensure the safety and comfort of all passengers. It is every student's responsibility to follow the simple rules outlined in the Code.

If students misbehave on buses, the following consequences may result:

UNACCEPTABLE BEHAVIOUR

such as using offensive or racist language, disobeying reasonable directions from the driver, smoking, spitting, damaging property, eating on the bus, distracting the driver with persistent noise and failing to show the travel pass



may lead to

the loss of subsidised school travel privileges for up to two school weeks for a second offence, and up to ten school weeks for subsequent offences. Permanent suspension of school travel privileges or banning from travelling on buses may apply for repeated offences.

DANGEROUS BEHAVIOUR

such as seriously bullying or harassing other passengers, fighting, letting any part of your body protrude from the bus, throwing objects inside or outside the bus, using matches and lighters, carrying dangerous items and group misbehaviour



may lead to

the loss of subsidised school travel privileges for up to four school weeks for a first offence and up to ten school weeks for subsequent offences—or if group misbehaviour is involved, permanent loss of school travel privileges. Permanent suspension of school travel privileges or banning from travelling on buses may apply for repeated offences.

HIGHLY DANGEROUS BEHAVIOUR

such as interfering with safety equipment, pushing students out of the doors or windows, assaulting the driver or other passengers and destruction of bus property



may lead to

the permanent loss of subsidised school travel privileges, and possible court action or police prosecution. Students may be banned from travelling on buses.

The police will be called to deal with highly dangerous behaviour.

These penalties reflect the seriousness of the misbehaviour. They ensure that all students who misbehave on buses are dealt with in a fair and consistent manner, no matter which bus operator or school is involved.

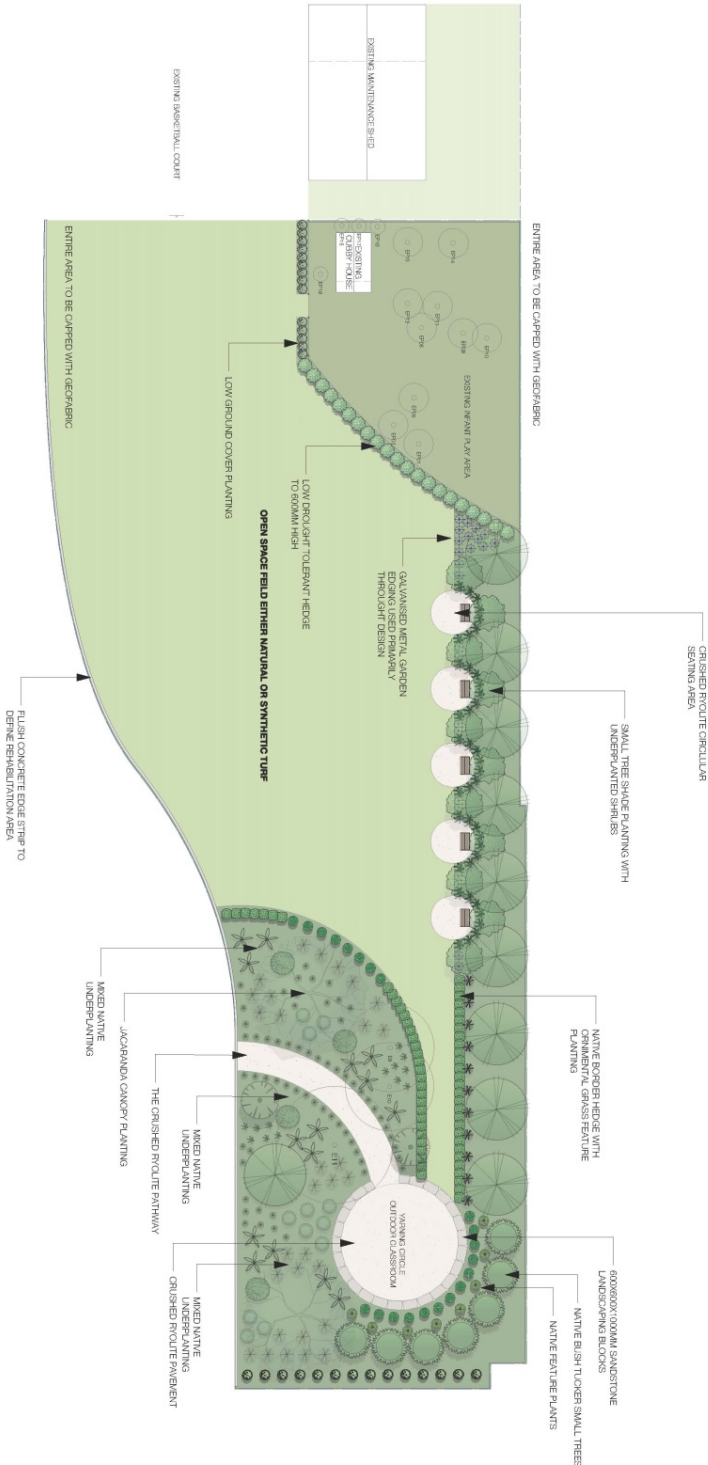
If students are refused travel, parents/guardians/carers must make alternative travel arrangements and meet any costs of that transport. They will not be eligible for the Ministry of Transport Private Vehicle Conveyance Scheme under these circumstances.

A group of school students behaving unacceptably may risk higher penalties if their conduct puts the safety of other passengers or the driver at risk.

The operator will inform the Ministry of its decision. The Ministry may inform an operator of a student's record of misbehaviour. Please refer to the *Guidelines for Managing School Student Behaviour on Buses* for dealing with incidents of inappropriate behaviour. They can be found at www.transport.nsw.gov.au and are available at each school.

BACK PLAYGROUND PROPOSED PLAN

SKETCH V2 DESIGN ONLY FOR COMMENT



Preliminary Sketch Design

JAMIE BACON LANDSCAPE DESIGN

creating beautiful outdoor spaces
JAMIE BACON LANDSCAPE DESIGN, 5th FLOOR, 100/101
55, Victoria Street, Sydney, NSW, 2001
M: 04 18 425 291 E: jbacon@jamiebacon.com.au W: www.jamiebacon.com.au
IMPORTANT NOTICE:
THESE DRAWINGS SHALL BE READ IN CONJUNCTION WITH
1. ASBESTOS MAP 16/02/2016
2. ARBORIST REPORT 12/02/2016

DATE	DESCRIPTION	BY
27/9/16	SKETCH DESIGN VERSION 2	JB
27/9/16	SKETCH DESIGN VERSION 1	JB
27/9/16	SKETCH DESIGN	JB

The design is a preliminary sketch design and is not to be used for construction. It is intended to provide a visual representation of the proposed design and to invite comment and feedback from the client. The design is subject to change without notice and is not to be used for any other purpose without the written consent of Jamie Bacon Landscape Design.

PROJECT	Score Public School Landscape Rehabilitation
ADDRESS	82-88 Liverpool Street, Score NSW, 2337
TOWN	Gary Mural, NSW Public Works Advisory Department
DATE	27/9/16
SCALE	1:300
OF	10



PROJECT	000166SPS	SCORE NSW
DATE	20/9/16	SCORE NSW
SCALE	1:300	SCORE NSW
OF	10	SCORE NSW

